

This former kitchen now delivers delights for the ears and eyes.
Daniel Sait reports

Cooking up an AV storm

KIT CHECKLIST

EPSON: EH-LS10500 laser projector, 4K enhanced and HDR compatible
SCREEN RESEARCH: 120in 2:40:1 ratio fixed-frame projector screen
ARTCOUSTIC: 3 x Spitfire 4-2s (LCR speakers); 1 x Spitfire Control 2 subwoofer; 2 x Target SLs (surround speakers); 2 x Architect 2-1s (in-ceiling speakers)
INTEGRA: DRX-7 AV receiver, 9 x 140W, Dolby Atmos and DTS:X compatible
PANASONIC: DMP-UB900 4K Blu-ray player
SKY: Q Silver PVR
RTI: System control
RAKO: Smart lighting

THIS PROFESSIONAL PROJECT by South East-based installer Cinema Rooms involved a big transformation as the space designated for cinematic conversion used to be a kitchen, the owner having recently had a new one built in an extension. So out went the fridge, oven and sink and in came an Atmos-compatible audio system and laser-powered projection.

An Epson EH-LS10500, offering HDR playback and 4K upconversion, plus lens memory function for shifting between 16:9 and 2:40.1 ratios, works in tandem with a 120in, 4K-optimised CinemaScope screen from Screen Research, the largest screen possible given the room's dimensions. For speakers, the cinema uses Artcoustic models. 'We took the client to the Artcoustic showroom in Chelmsford to audition speaker options, and specified a 5.1.2 Dolby Atmos system,' says Cinema Rooms' director Simon Gregory. 'We use Artcoustic as our primary brand as the range ticks all the boxes.'

Rounding out the equipment is an Integra DRX-7 AV receiver, Panasonic DMP-UB900 4K Blu-ray player, Sky Q and Sonos connection.

The light touch

Lighting and design touches ensure the room feels far removed from its kitchen origins. To control the main illumination and star ceiling, Cinema Rooms used Rako lighting with DMX and LED module controllers; to make everything work as seamlessly as possible, an RTI system, with an iPad interface, was integrated. 'The family really like the ease of use,' explains Gregory.

Crushed velvet on the walls and chairs, a tidy front-wall AV cabinet and a sweet/snack dispenser finished the space off. The cinema is now in frequent use as a family space for kids' TV, Netflix, sports and movie nights ■

A. Adding some atmosphere

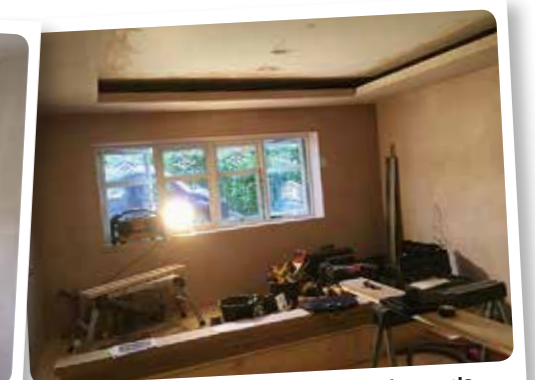
A pair of in-ceiling speakers deliver 3D audio height to top off the 5.1 system

B. You've been framed

With a fixed-frame screen on the owners' wishlist, a 120in 2.40:1 model was chosen to maximise the space available, with the room's LCR speakers mounted behind. The Epson projector's lens memory skill enables automated ratio switching >



After the initial planning stage, the installer's first task was to strip out the existing kitchen and prepare the room for its home cinema transformation



A ceiling soffit was constructed to house the room's dramatic LED and star ceiling lighting. An existing window was retained, but fitted with black-out blinds

INSTALL



C. Reach for the stars

The Rako-controlled star ceiling is a family favourite, adding a luxury touch

D. Cabinet meeting

Rather than racking hardware in a separate room, AV furniture was installed below the projector screen, giving easy access

E. Double bass

Providing LFE is an Artcoustic on-wall subwoofer. The Spitfire Control 2 features dual 10in woofers and claims a 20Hz frequency response

F. Sweet dreams

The room may no longer be a kitchen, but you don't have to trek far to grab an in-movie snack...

G. Personal preview

The installer produced full renders of the project so the owner could see how the finished cinema room would look

